



Madison County, NC
14.16 Acres
\$ 89,000

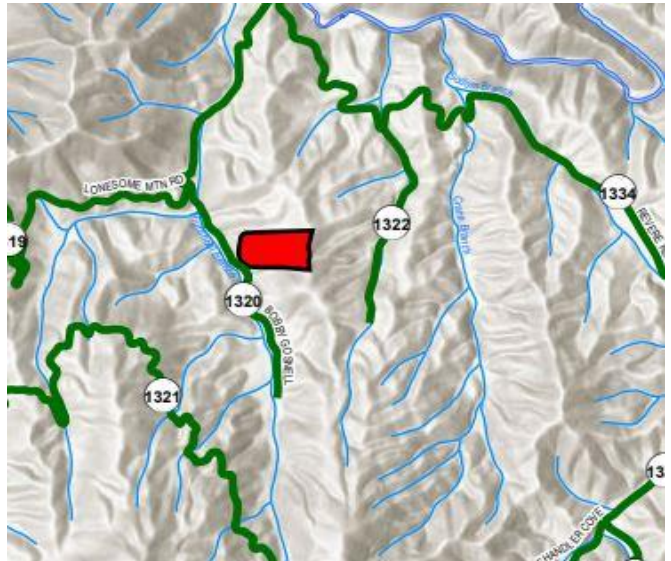
Serene Privacy in Madison County

Serene and Private

Towering mature hardwood and white pine trees are scattered about the gently rolling terrain. There are several opportunities for a level home-site with good sun exposure in addition to amazing mountain views. Wonderful recreational opportunity for the avid hunter looking for a small tract to manage for wild game. The access road was recently repair/re-graded to make the property more accessible. Owner financing is a possibility, please contact agent for listing terms.

Minutes to Downtown Marshall

Located 22 minutes to downtown Marshall, 21 minutes to downtown Hot Springs and 45 minutes to Pack Square in downtown Asheville.



For More Information or to
schedule a private visit, please
contact

David Cheatham at
828.575.0352!

www.rurallandinvestment.com