



Richland County, SC
\$ 221,560 | 76.4 Acres

Terrapin Woods Road Tract

Natural Hardwoods and Managed Pines on 76 Acres

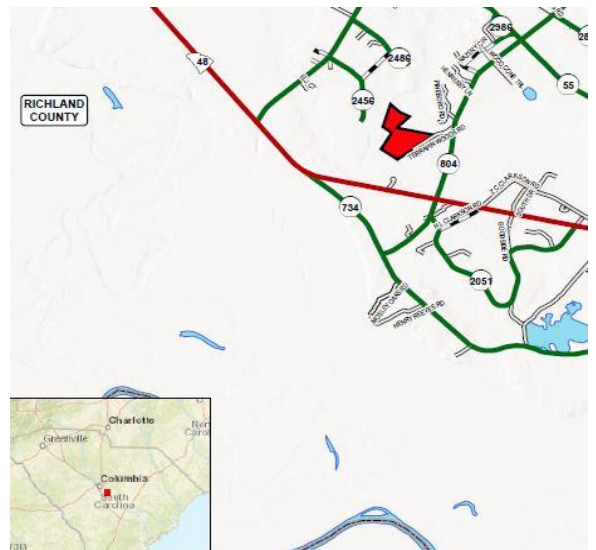
With oak-lined flat woods, a beautiful hardwood bottom on Cabin Branch and over 26 acres of once-thinned pine plantations, the Terrapin Woods Road Tract is ready to give you a classic Lower Richland County deep woods hunt. The gentle topography offers plenty of opportunities to establish game patches adjacent to the hardwood drains with native oaks. The diversity of habitats is sure to attract deer and turkey and reward your management efforts.

An Ideal First Timberland Investment

The planted pine stands on the Terrapin Woods Road Tract are fully stocked and have been thinned once. The available liquid timber value adds short-term security to a long-term land investment. Having once been agricultural fields, the acres currently occupied by pines could again be converted back to pasture or crop production. Frontage Terrapin Woods Rd. and favorable topography along the frontage contribute to excellent timber management access, and the property is within attractive haul distances to several wood-using facilities.

Conveniently Hidden

It would be difficult to find a faster escape for afternoon deer hunts or more convenient way to pull a bird from the roost and still make your morning meetings. The Terrapin Woods Road Tract is less than 15 miles down Bluff Rd. from downtown Columbia, and minutes away from Congaree National Park Monument.



For More Information or to
schedule a private visit,
please contact
Billy Cate at 803.261.9052
www.rurallandinvestment.com